



SERVICES & PRODUCTS

**Environmental Systems
& Equipment Service**

ES2 Customers

Wastewater Treatment



Solid Waste Landfills



Mines and Quarries



Field Service & Maintenance

ES2 technicians install, troubleshoot, repair, modify, calibrate and maintain process controls, instrumentation and chemical feed systems.



Process Controls:

Programmable controllers, relay logic, analog control (PID) loops, recorders, data-loggers, motor controls, VFDs, SCADA, DCS systems and similar process controls.



Instrumentation:

Analyzers and transmitters for pH, ORP, dissolved oxygen, turbidity, chlorine residual, level, flow, pressure, temperature, flame and gas concentration.



Chemical Feed:

Gas feed systems for CL, SO₂, NH₃, CO₂ and ozone. Liquid feed systems for acid, caustic, sodium hypochlorite, sodium bisulfite, coagulants, flocculants and specialty chemicals.

CALL ES2 TOLL FREE: 877-766-2372



**Environmental Systems &
Equipment Service, Inc.**

6912 Old Easton Road, P.O. Box 507
Pipersville, PA 18947

Phone: 877-766-2ES2 (2372) toll free
Fax: 215-766-7783

www.ES2inc.net

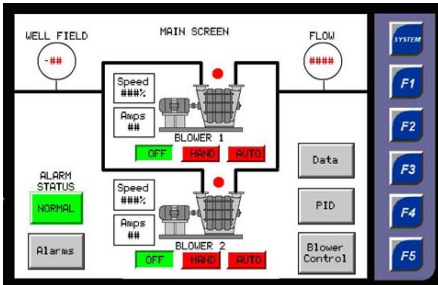


SERVICES & PRODUCTS

Environmental Systems
& Equipment Service

Products & System Integration

ES2 provides quality equipment, systems and replacement parts, working with you to determine what is the best solution to your needs.



Control Systems: ES2 works with you to help identify your specific needs and then provides a complete (turn-key) solution including, design, fabrication, programming, installation, start-up and training.



Instrumentation: Analyzers and transmitters for pH, ORP, DO, CL, turbidity, level, flow, pressure, temperature, flame and gas concentration. Gas detection and calibration gases.



Chemical Feed: Gas and liquid feed systems for CL_2 , SO_2 , NH_3 and CO_2 . Liquid feed systems for acid, caustic, sodium hypochlorite, sodium bisulfite, coagulants & polymers, and on-site hypochlorite generation.

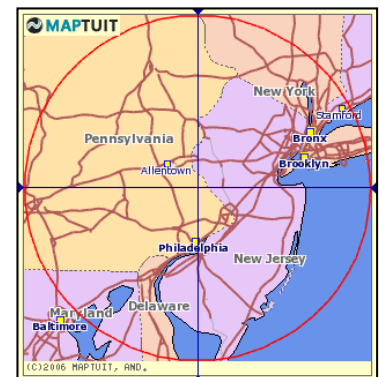
System Integration: Controls and instrumentation, data acquisition and logging, wireless communications, process piping and complete skid mounted systems for chemical feed, biogas handling, flares, and related processes. ES2 specializes in *turn-key* small system design/build, installation, start-up and training. *From start to finish, ES2 will work with you to provide a complete system.*

ES2 Mission Statement

- ES2 will always provide what is promised, dependably and accurately.
- We are knowledgeable and courteous and will prove our trustworthiness, competence, and confidence on every job we're given.
- Our tools and supplies, like our technicians will be the best available for the job.
- We care enough to get to know each customer personally in order to provide the attention they deserve.
- From your first contact, we'll help you promptly and to the best of our ability.

ES2 Territory

The ES2 home base is in Pipersville, Bucks County, PA and we serve customers primarily in Eastern Pennsylvania and New Jersey.



Toll free:

877-766-2ES2 (2372)

E-Mail: service@ES2inc.net